

Updating the BraillePen 12 Firmware

Service personnel and Distributors only!



Contents

Updating the BraillePen 12 Firmware	1
What you need:.....	1
Steps to take:.....	1
Bluetooth connection:.....	1
Programming the BraillePen 12 with the new firmware.....	4

What you need:

BraillePen 12

Bluetooth connection to Windows PC or laptop

BraillePen 12 programming software, BTProg.exe

Latest BraillePen 12 firmware file, bbp.rom

On the Windows PC, you need Microsoft .NET framework 4.0. You can download it from here if it isn't already installed:

<http://www.microsoft.com/downloads/en/details.aspx?FamilyID=9cfb2d51-5ff4-4491-b0e5-b386f32c0992&>

or

<http://tinyurl.com/2us5cvn>

Make sure you install the correct version for your Windows version and processor type.

Steps to take:

1. Reset BraillePen 12 by pressing **space + dot 1 + dot 3 + joystick enter**. Hold for 5 seconds and then release all the keys together.
2. **Immediately** after releasing the Reset keys, press **dot 4 + dot 6** to enter bootloader mode.
3. Hold the Bootloader keys down for about 1 second until you hear a single high beep. This lets you know you are in Bootloader Mode. You will then hear the triple-beep of the BraillePen 12 Bluetooth initialization.
4. Connect the BraillePen 12 to the Windows PC via Bluetooth.

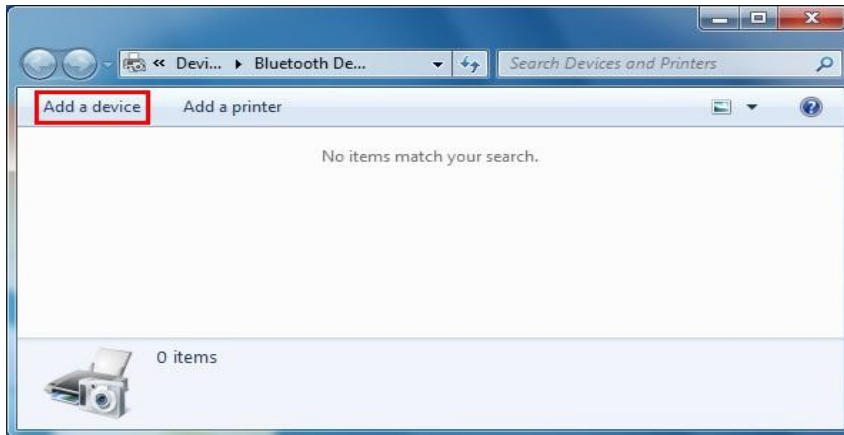
Bluetooth connection:

This procedure may vary depending on the type of Bluetooth adapter you have. The steps are: Go to your Bluetooth preferences and find the BraillePen 12 Bluetooth device - the Bluetooth name begins with: **EL12-**. Pair the PC with the BP12 using the code 1234. Find out which port is used by your Bluetooth serial port service for BraillePen 12 so that you can use it to program the BraillePen 12 with the software provided.

The example pairing process below is taken from the process used for the type of Bluetooth Adapter using the Microsoft stack. Consult your BraillePen 12 User Guide for more information on other Bluetooth types.

Making a connection with BP12 on Windows 7:

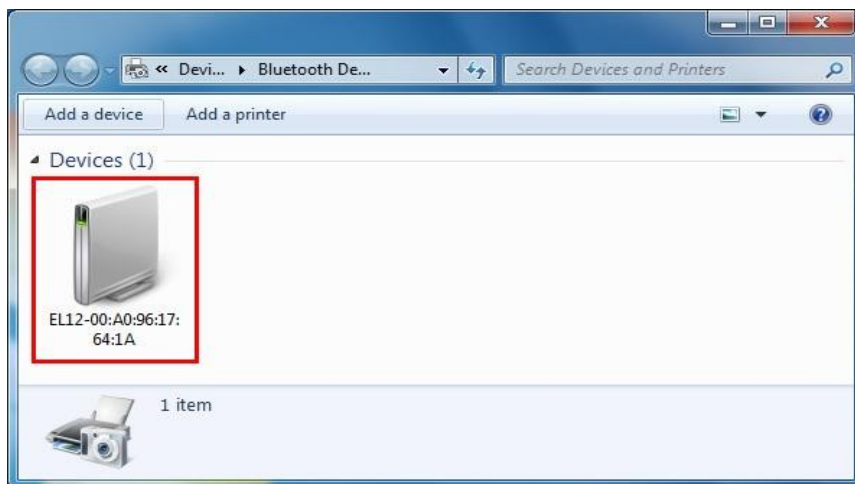
1. Open your Bluetooth settings in Devices and Printers, and choose the Add a device option:



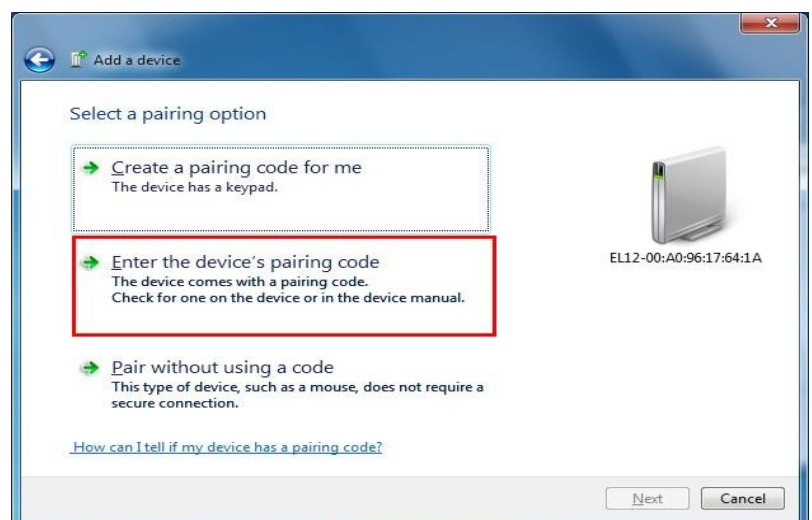
You can do this from the Control Panel, from Devices and Printers, or by right-clicking the Bluetooth icon in your System Tray.

In Windows XP, look in the Control Panel for Bluetooth settings, or for a desktop icon called My Bluetooth Places.

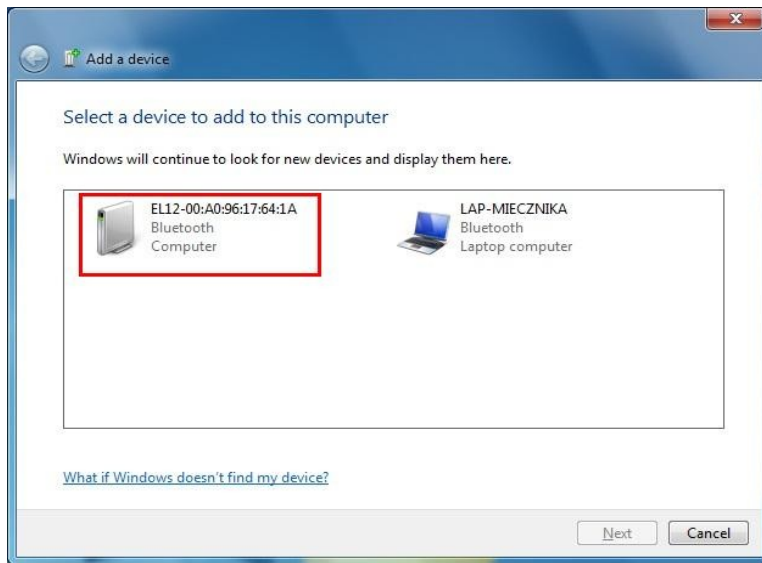
2. Select the BraillePen 12 from the list of discovered devices and click Next.



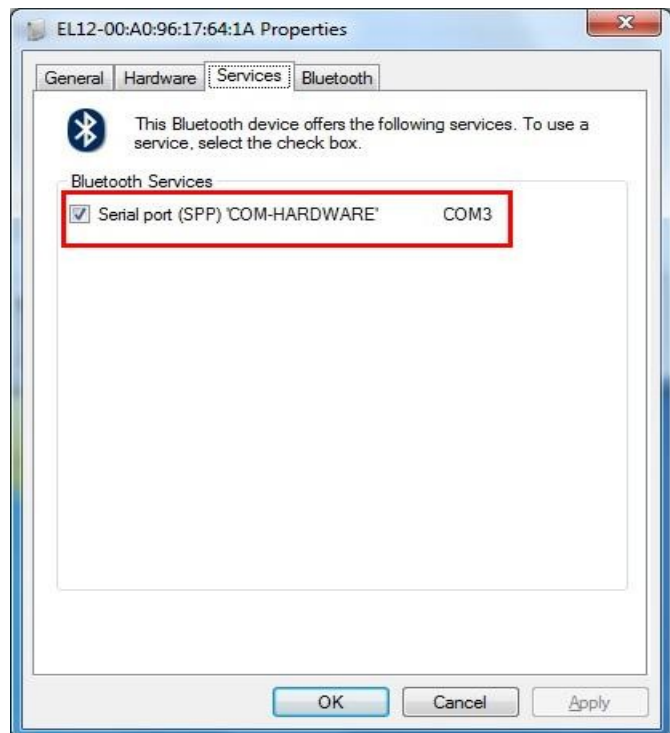
3. Enter the device's pairing code option and enter the code: 1234



4. Right-click on the BP12 device and choose the properties option from the context menu.



5. Open the Services tab and check the port number. Make a note of this - you will need it in a moment!



Programming the BraillePen 12 with the new firmware

Run the BtProg.exe application.

BtProg needs Microsoft .NET Framework Version 4.0. You can download it from:

<http://www.microsoft.com/downloads/en/details.aspx?FamilyID=9cfb2d51-5ff4-4491-b0e5-b386f32c0992&>

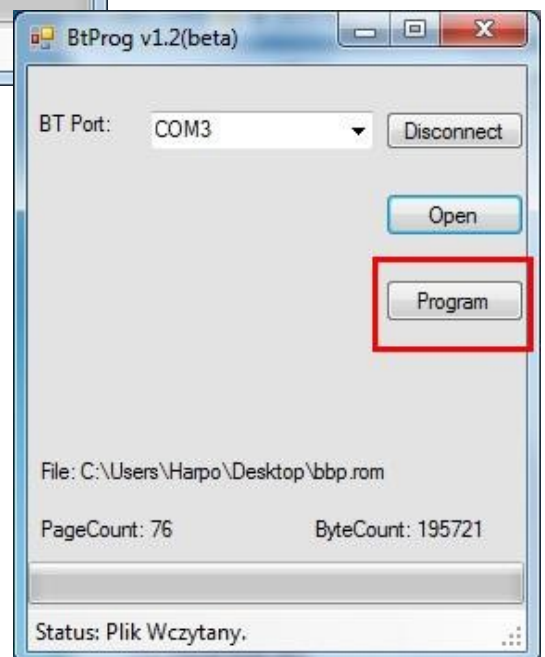
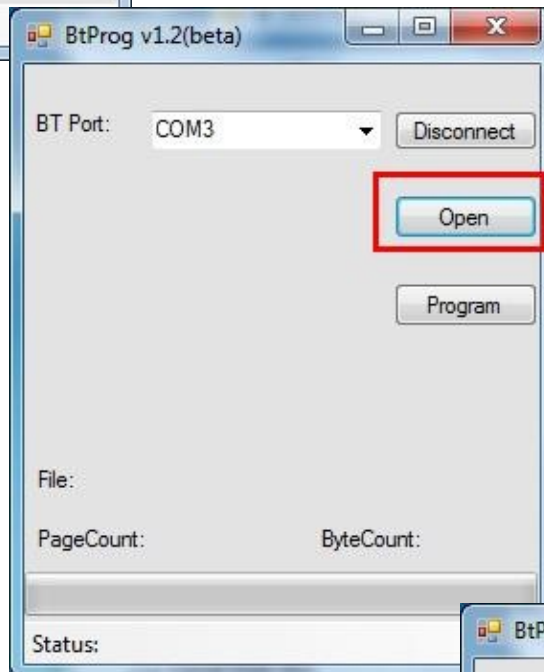
1. Enter the Braille Pen 12 serial port number in the BT Port box and click the Connect

button.



2. Click the Open button and select the BraillePen 12 firmware file (*.rom) from the file selection dialog that appears.
3. Click the Program button to program the device. You will see a progress bar filling across the bottom of the window; when programming is complete you will hear a fast series of 6 short beeps.

If there is a problem or an error message instead of the 6-beep series, repeat all the steps from the Reset of the BraillePen 12 at the beginning.



Once programming is completed successfully, turn the BraillePen 12 on normally with **space + dot 1 + dot 3**. It is now ready to use.