

Installing BraillePen Write

The BraillePen Write installer is a single file called bp_setup_en_1.5g.exe or similar. The letters and numbers at the end of the filename refer to the language and version number, in this case English, version 1.5g.

If you have an older version installed

Before installing BraillePen Write, make sure you have fully uninstalled the previous version.

Go to Control Panel, Add and Remove Programs (Windows XP), or Control Panel, Programs and Features (Windows Vista or Windows 7). Uninstall both the following programs:

__mfc_vcr

BraillePen n.nx (n.nx refers to the version number of the software)

Installing the software

Run the Setup file, bp_setup_en_1.5g.exe from the CD or your hard drive.

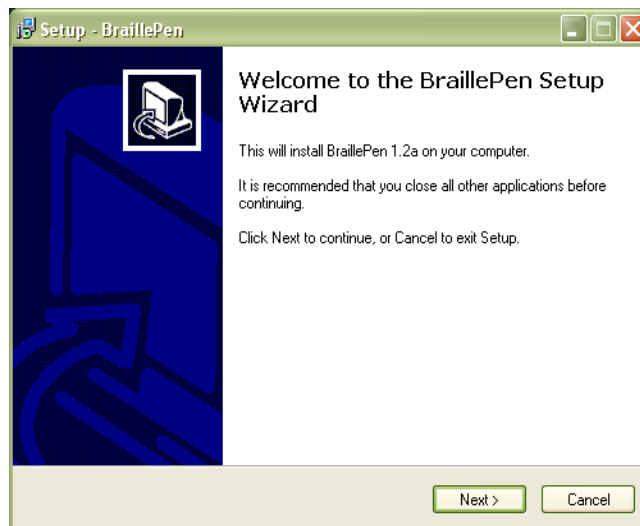


Illustration 1: The first dialog in the BraillePen Write install process.

The first dialog of the installation process tells you the version of the software you are installing. The next dialog offers you the chance to change the installation location, although the standard location usually works well.

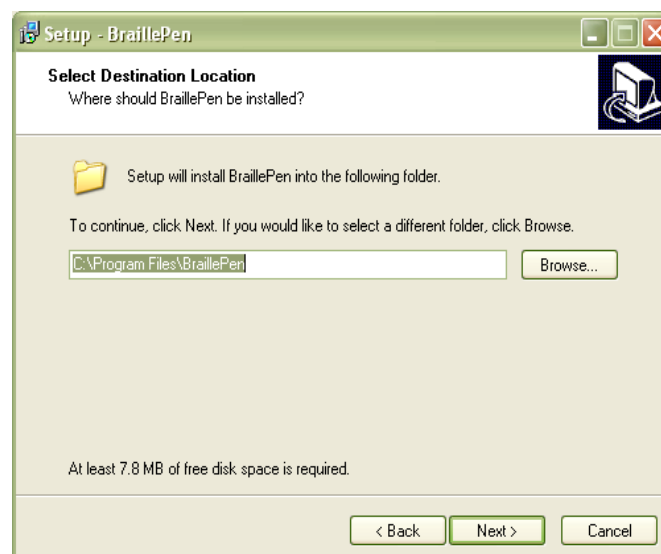


Illustration 2: Step 2 in the BraillePen Write install process.

The third dialog offers you the chance to nominate the program's shortcut location in your Programs menu.

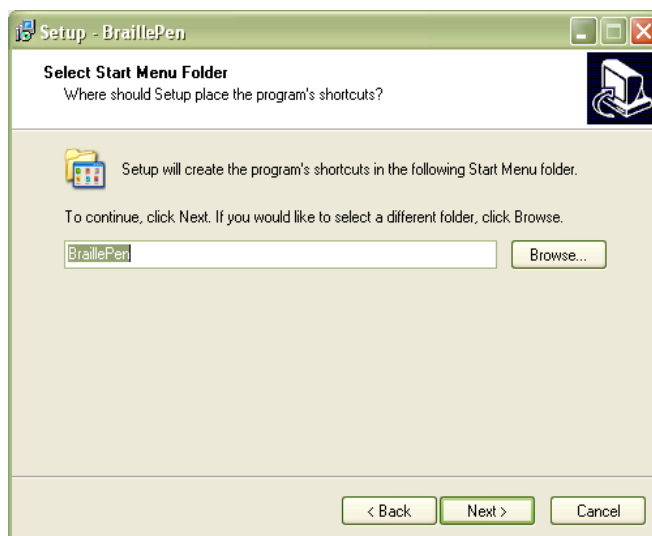


Illustration 3: Step 3 in the BraillePen Write install process.

The fourth dialog asks if you would like a desktop icon or a quick launch icon or both; and the fifth dialog gives you the chance to review your choices and go back to change them.

The sixth step is the actual installation, where you can monitor the installation progress.

The final dialog of the installation asks whether you want to launch the software when you click Finish to exit the installation process.

If you leave "Launch BraillePen" checked, then once you click Finish, the software will run.

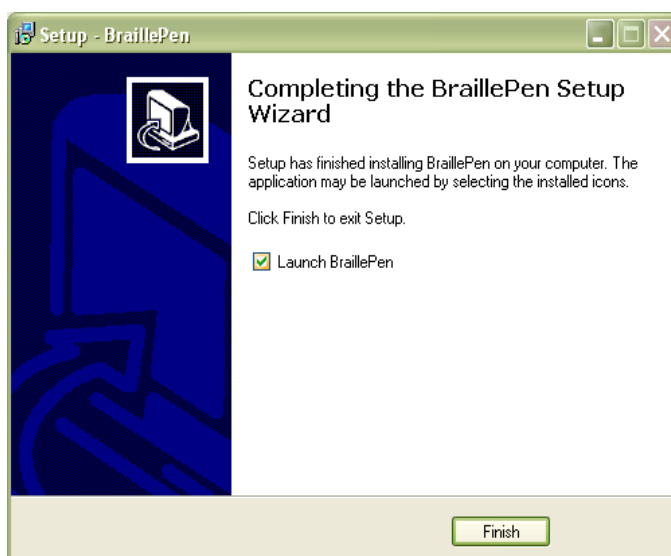


Illustration 4: Final step in the BraillePen Write install process.